



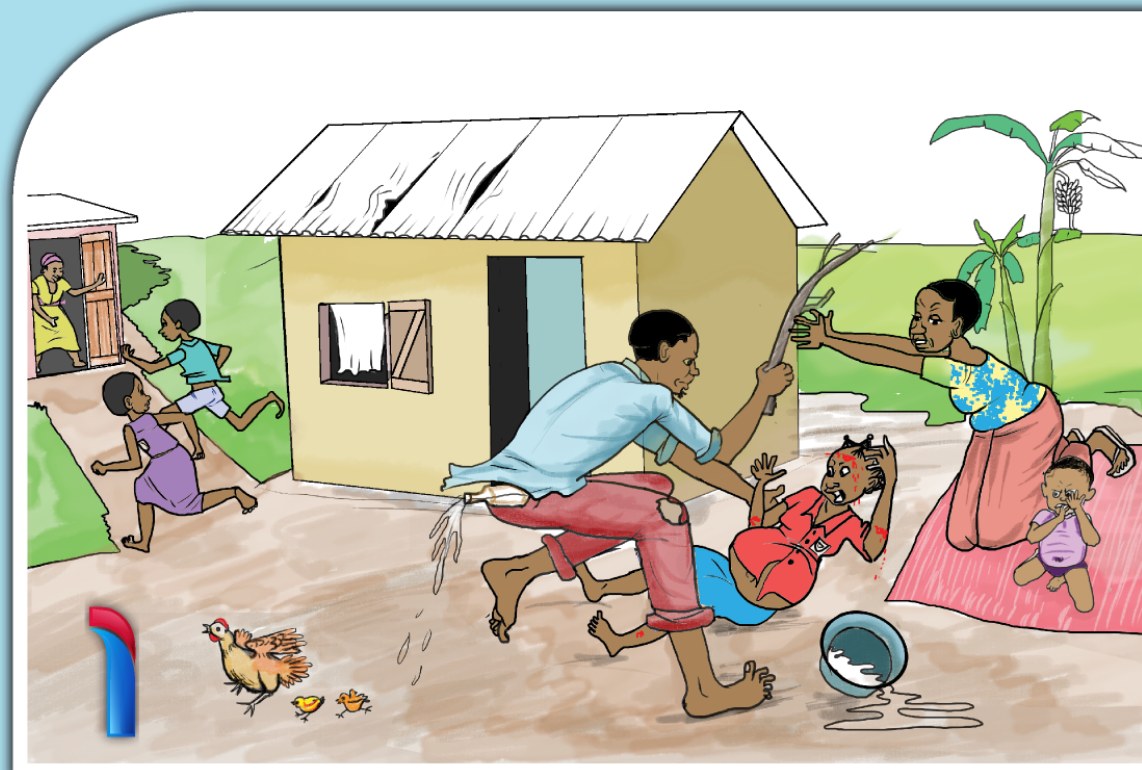
Sustaining Women's Leadership



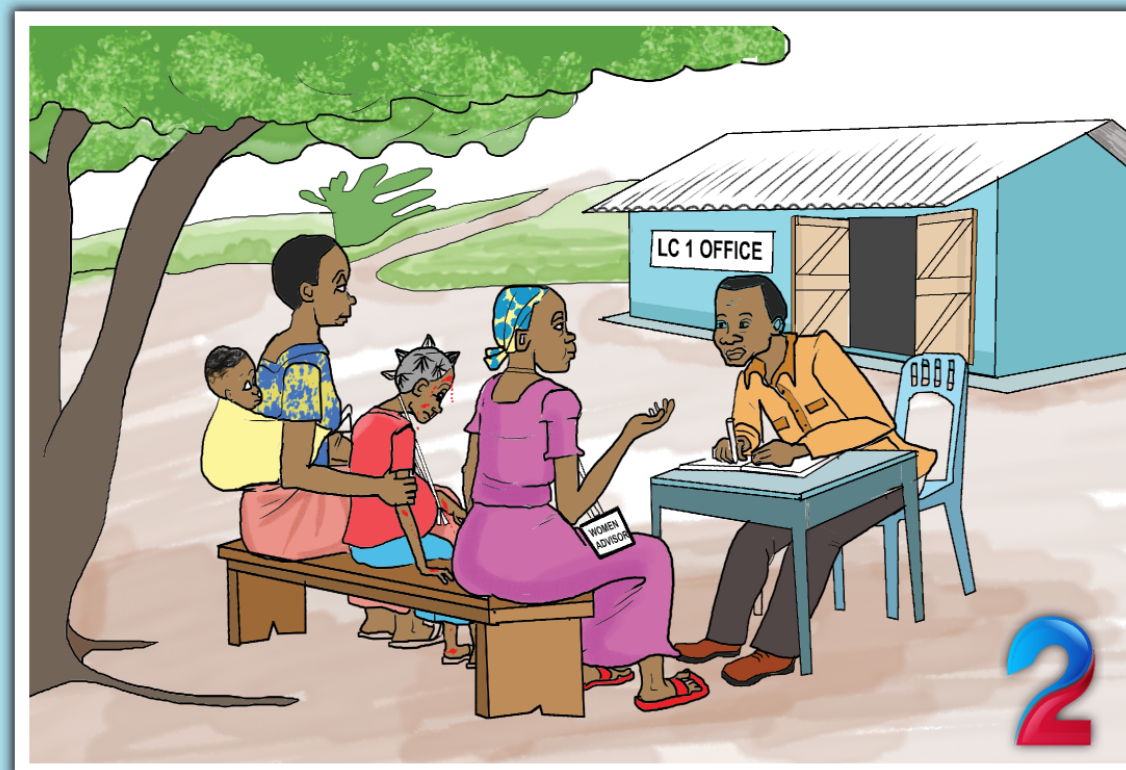
Girls First Fund

Supporting Communities To End Child Marriage

GBV Referral Pathway



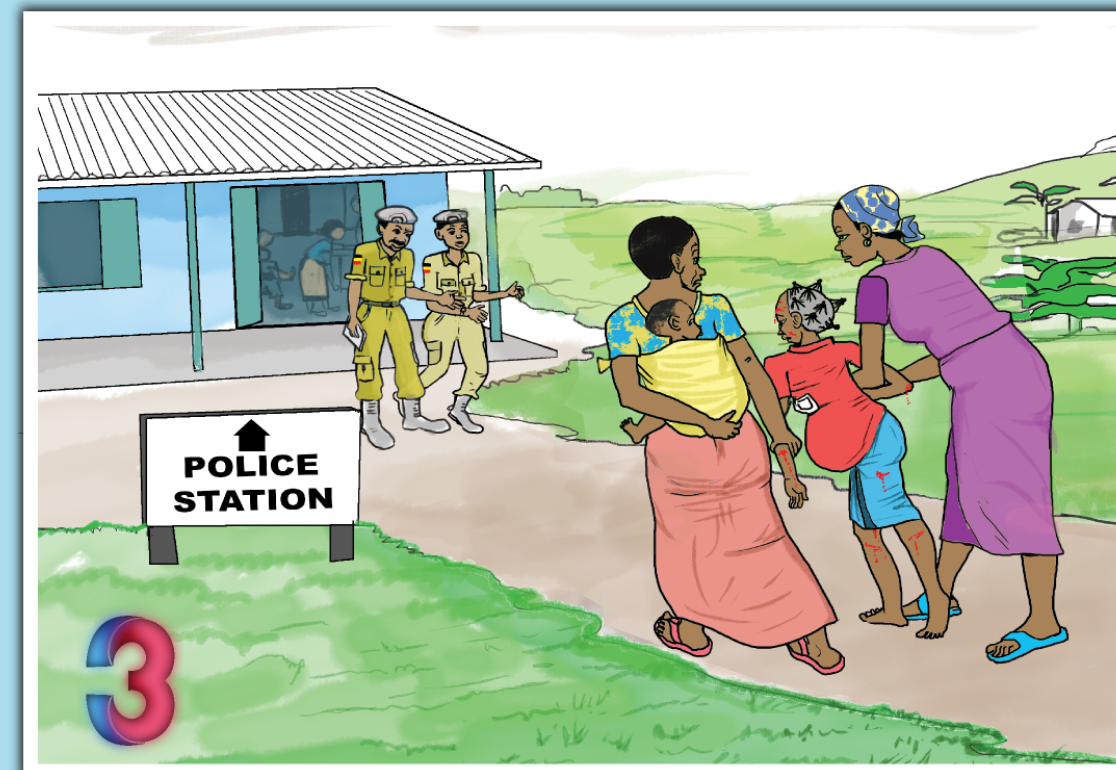
CHILD MARRIAGE IS NOT A CULTURE; IT'S A CRIME. NO CHILD SHOULD BE ROBBED OF THEIR FUTURE IN THE NAME OF TRADITION, POVERTY, OR SILENCE. EVERY GIRL HAS THE RIGHT TO CHOOSE EDUCATION, SAFETY, AND DIGNITY, NOT A FORCED UNION. LET'S BREAK THE CYCLE, PROTECT CHILDHOOD, AND HOLD ACCOUNTABLE ANYONE WHO PROMOTES, PARDONS, OR BENEFITS FROM CHILD MARRIAGE.



FIRST RESPONDERS / FRONTLINE WORKERS

E.G.: LC1, TEACHERS, COMMUNITY VOLUNTEERS, VHT

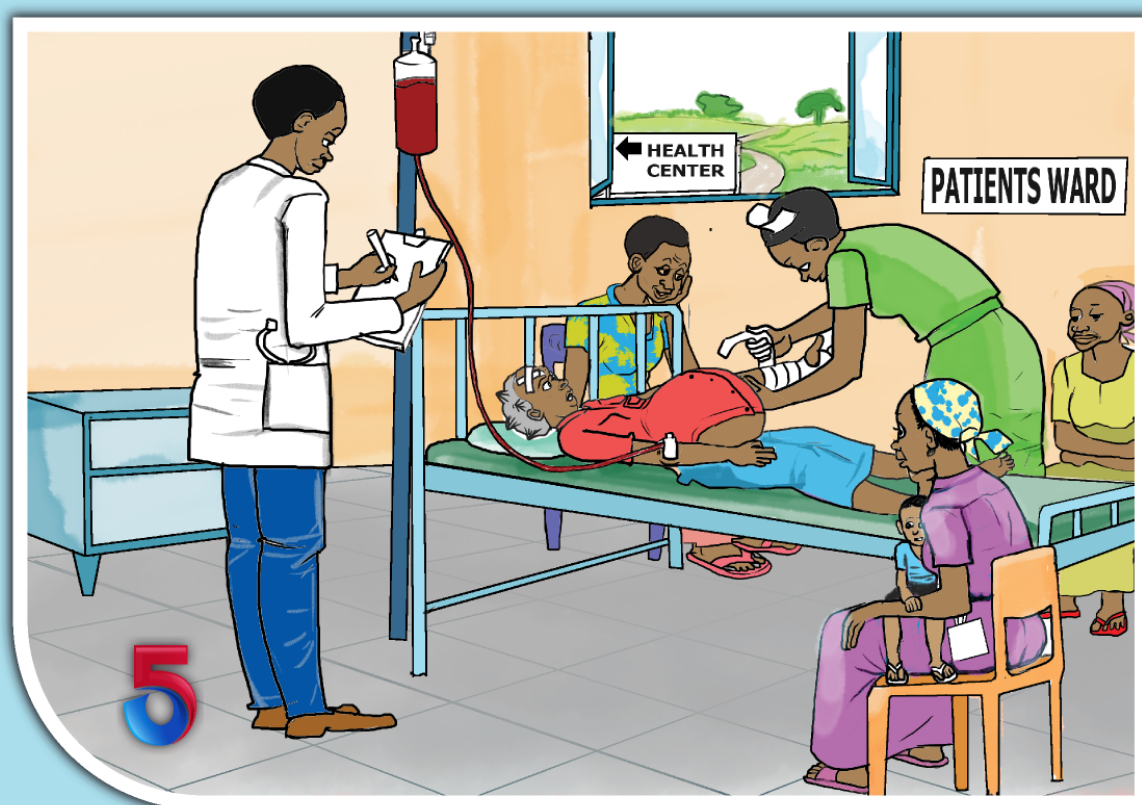
- ✓ IDENTIFY AND REPORT CASES OF ABUSE OR RISK
- ✓ ENSURE CONFIDENTIAL, NON-JUDGMENTAL HANDLING OF THE CASE
- ✓ LINK THE SURVIVOR TO APPROPRIATE SERVICES VIA THE PATHWAY



POLICE / LAW ENFORCEMENT

KEY ACTORS: CHILD AND FAMILY PROTECTION UNIT, OC-CID ETC

- ✓ RECEIVE AND DOCUMENT FORMAL COMPLAINTS
- ✓ INVESTIGATE AND PURSUE LEGAL CHARGES AGAINST PERPETRATORS
- ✓ ENSURE PROTECTION ORDERS OR SAFETY PLANS ARE ENFORCED



HEALTH / MEDICAL SERVICES- : CLINICS, HOSPITALS

KEY ACTORS: DOCTORS, NURSES, HEALTH FACILITY STAFF, CLINICAL OFFICERS

- ✓ PROVIDE URGENT MEDICAL CARE, POST-RAPE CARE, STI/HIV TESTING, AND EMERGENCY CONTRACEPTION
- ✓ DOCUMENT INJURIES AND FORENSIC EVIDENCE (IF NEEDED FOR LEGAL FOLLOW-UP)
- ✓ OFFER MENTAL HEALTH SUPPORT OR REFER TO PSYCHOLOGICAL SERVICES

NB: FOR DEFILEMENT OR RAPE CASES, ACTION MUST BE TAKEN WITHIN 48 HOURS, THAT IS, THE VICTIM IS GIVEN PEP TO STOP PREGNANCY, HIV, AND TO CAPTURE EVIDENCE FOR FURTHER ACTION.



PSYCHOSOCIAL AND CASE SUPPORT

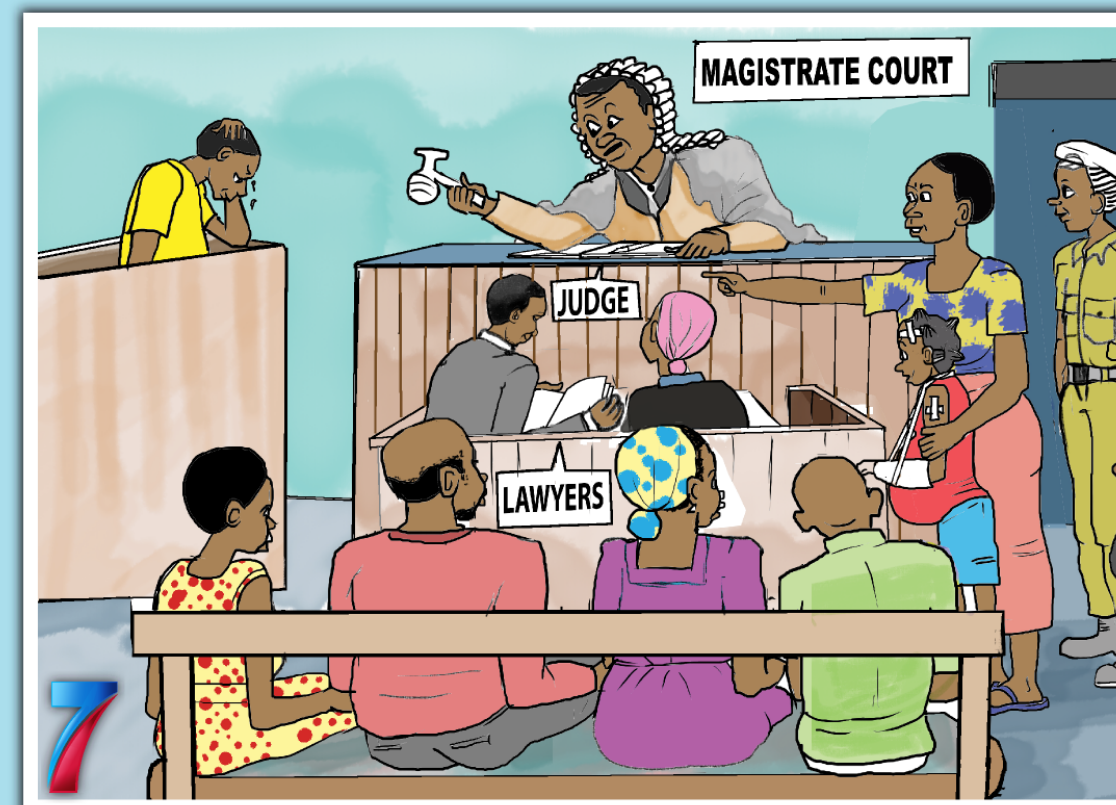
KEY ACTORS: WOMEN ADVISORS, TRAINED COUNSELLORS, SOCIAL WORKERS, NGOS

- ✓ SEEK AND GET EMOTIONAL AND PSYCHOSOCIAL SUPPORT
- ✓ SUPPORT SURVIVOR BUILD COPING MECHANISMS AND RESILIENCE
- ✓ WORK WITH FAMILIES TO REDUCE STIGMA AND ENABLE REINTEGRATION
- ✓ FOLLOW-UP OF CASES

SOCIAL / CHILD PROTECTION SERVICES

KEY ACTORS: CDO, PROBATION AND SOCIAL WELFARE OFFICERS, HELPLINES

- ✓ CONDUCT FAMILY AND SAFETY ASSESSMENTS
- ✓ PLACE CHILDREN IN TEMPORARY SHELTER OR SAFE SPACES IF NEEDED
- ✓ LINK SURVIVORS WITH PSYCHOSOCIAL SUPPORT, REINTEGRATION SERVICES, OR EDUCATION
- ✓ LEAD CASE MANAGEMENT AND FOLLOW-UP



LEGAL / JUSTICE SYSTEM

E.G., LAWYERS, LEGAL AID, PARALEGALS, MAGISTRATES

- ✓ LEGAL ADVISE AND REPRESENTATION
- ✓ SUPPORT SURVIVORS IN NAVIGATING LEGAL PROCEDURES I.E FILING CASES, COURT ATTENDANCE
- ✓ ADVOCATE FOR SURVIVOR LEGAL RIGHT AND ACCESS TO JUSTICE
- ✓ FOLLOW-UP OF CASES



GENDER BASED VIOLENCE SHELTER

KEY ACTORS: NGOS RUNNING SHELTER, PROBATION UNIT

- ✓ PROVIDE TEMPORARY SAFE SHELTER/ ACCOMMODATION FOR THE SURVIVOR
- ✓ SUPPORT WITH ECONOMIC EMPOWERMENT AND REINTEGRATION
- ✓ HELP RESTORE DIGNITY AND INDEPENDENCE POST-ABUSE

TOLL FREE LINES

NEBBI HELPLINES

- SAUTI TOLL FREE: 116
- POLICE EMERGENCY CALL CENTER: 0800 199 399
- NEBBI CPS: 0762 962136
- POLICE - NYARAVUR: 0200 947978 / 0741 566268
- POLICE - GOLI: 0741 566268